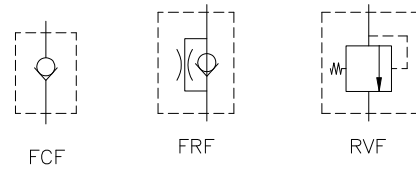


FC, FCF— CHECK VALVE

FR, FRF— RESTRICTOR

RV, RVF— RELIEF VALVE



METRO MACHINE & ENGINEERING 952-259-3623

DESCRIPTION

The model FC-FCF Check Valve, FR-FRF Restrictor (Throttle) Valve, RV-RVF Relief Valve series of inline valves are available in a variety of sizes. These valves will operate satisfactorily when mounted inline in any position.

The FC,FR and RV are male/female design whereas the FCF, FRF and RVF are female/female design.

APPLICATION DATA

The FC-FCF Check Valves allow free flow in one direction and checked flow in the opposite direction. Cracking pressure is 1 psi (.07 bar).

The FR-FRF Restrictor (throttle) Valve allows free flow in one direction and restricted flow in the opposite direction. Applications include accurate control of a double acting cylinder by pressurizing both sides of the piston, reducing cavitations of cylinders and motors or speed control of cylinders and motors.

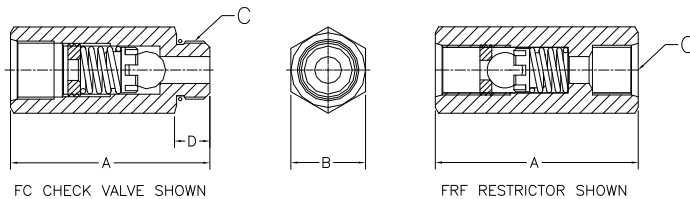
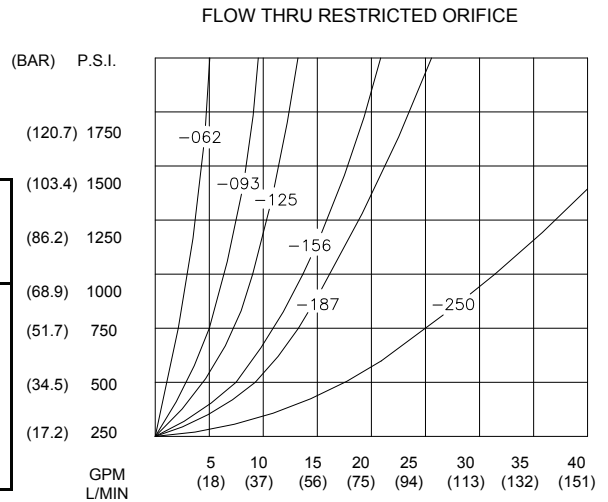
The RV-RVF Relief Valves provide an inexpensive, but reliable fast acting relief protection in a hydraulic circuit.

ORDERING INSTRUCTIONS

FR	50	-062
Model Number	Port Size	Orifice Size or Relief Setting
FC	08	Orifice size for restrictor valves only
FR	38	
RV	40	Relief setting for relief valve only
FCF	50	
FRF	60	
RVF		

SPECIFICATIONS

Pressure Rating	Temperature Range	Restrictor Valve Orifice Sizes				Relief Valve Pressure Settings
		Number	Size	Number	Size	
3000 PSI (207 Bar)	-22° to + 194° F	-046	3/64	-125	1/8	1 -500 PSI (standard) 501 -1200 PSI 1201 -2500 PSI
	-30° to + 90° C	-062	1/16	-140	9/64	
		-078	5/64	-156	5/32	
		-093	3/32	-187	3/16	
		-109	7/64	-250	1/4	



Port Sizes	A Length Inches (mm)	B Hex Size Inches (mm)	C Thread (Both Ends)	D Thread Length Inches (mm)	E Weight
All dimensions common for: FCF, FRF & RV					
08	3.0 (76.2)	1.12 (28.6)	3/4 -16 SAE #8	.44 (11.2)	8 oz. (.23 kg.)
38	3.0 (76.2)	1.00 (25.4)	3/8 -18 NPT	.75 (19.1)	8 oz. (.23 kg.)
40	3.0 (76.2)	1.06 (26.9)	3/8 -18 NPT male To 1/2 -14 NPT female	.75 (19.1)	9 oz. (.26 kg.)
50	3.0 (76.2)	1.06 (26.9)	1/2 -14 NPT	.81 (20.6)	9 oz. (.26 kg.)
60	3.38 (85.7)	1.38 (34.9)	3/4 -14 NPT	.81 (20.6)	1 lb. (.45 kg.)
All dimensions common for: FC, FR & RVF					
08	3.0 (76.2)	1.12 (28.6)	3/4 -16 SAE #8		9 oz. (.26 kg.)
38	3.0 (76.2)	1.00 (25.4)	3/8 -18 NPT		9 oz. (.26 kg.)
40	3.0 (76.2)	1.06 (26.9)	3/8 -18 NPT one end 1/2 -14 NPT other		10 oz. (.28 kg.)
50	3.0 (76.2)	1.06 (26.9)	1/2 -14 NPT		10 oz. (.28 kg.)
60	3.63 (92.2)	1.38 (34.9)	3/4 -14 NPT		1 lb. 3 oz. (.54 kg.)